

## Uniform Notes

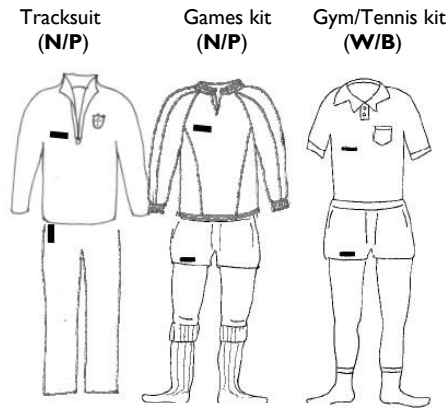
1. All items must be named and numbered: clothing must have nametapes sewn in and all footwear must be labelled using appropriate shoe labels. (Iron-on plastic tapes are not to be used as they do not withstand laundering).
2. All name tapes, including the large sports tapes, **MUST** be ordered via the School Matrons. An initial quantity is supplied on New Pupils Day and charged to your account.
3. All items marked with 'L' must have separate secure hanging loops sewn in.
4. Items marked \* **MUST** be obtained from the School Uniform Shop.
5. All items of clothing are available from the School Uniform Shop.
6. Outdoor sports kit is kept in the string bag, whilst the white shorts, shirts and socks are kept in the navy PE bag.
7. Abdominal Protector Pants and Box are required for the Summer Term. These are available from any good sports outfitters.

## Guide to Name Tapes

The Woven name tapes supplied by the school should be used to name regular, daily uniform in the collar or waist band or vertically at the top for socks.

Large Navy/Pink (**N/P**) and White/Blue (**W/B**) Name tapes for Sports Kit and Coat should be positioned as detailed here.

All other items must be clearly labelled with name and peg number to minimize 'borrowing' and loss of kit during the term.



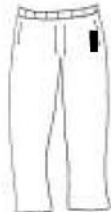
Coat  
(N/P nametape on collar)



Cricket Jumper  
(W/B)



Cricket Shirt  
(W/B)



Cricket Trousers (W/B)



Elstree School

## Day Boys' Uniform List

Boy's Name: .....

Peg Number: .....

House:       North (blue)  
 East (green)  
 South (red)  
 West (yellow)

The items marked with a \* in this Clothes List **MUST** be obtained from the Elstree School Uniform Shop. The **Elstree School Uniform Shop** is run by Mrs Shelly Francis and is located in Home Farm Old Dairy. The Shop is open twice a week on Monday and Friday from 8.00am - 9.00am during term-times, at various times before the start of each term, and by appointment during term-time and throughout the school holidays.

**Contact details:** Email [uniformshop@elstreeschool.org.uk](mailto:uniformshop@elstreeschool.org.uk) to make an appointment or to ask any questions.

Some second-hand uniform is also available and held by the matrons. Please email contact [matron@elstreeschool.org.uk](mailto:matron@elstreeschool.org.uk) for further details.

It is also possible to place uniform orders by post or email using the Clothes Order Form and Price List which are available from the Uniform Shop with a cheque payable to 'Direct Clothing Company'. When payment has been received and the shop is next open, orders are then left for collection in the Front Hall

Every boy should arrive at the start of each term fully equipped with all clothes **clean, mended and well marked** with name and peg number. Details of which clothes require hanging loops and where to label sports clothes are on this clothes list. Only those clothes listed should be sent to School. Non-standard items will not be accepted. When necessary, the matrons will sew on name tapes for 50p per item of clothing.

## School Uniform List for Day Boys

MAIN UNIFORM	Lopp Required	Autumn Term	Lent Term	Summer Term
Barathea blazer, navy, with Elstree buttons*	L		1	
Navy Coat with Elstree crest*	L		1	
Long trousers, medium grey, machine washable			<b>3 pairs</b>	
Pullover, navy, long sleeves, crew neck			<b>2</b>	
Pullover, navy, sleeveless			<b>2</b>	
Long sleeved shirts, pale blue, polyester/cotton			<b>4</b>	
Short sleeved shirts, pale blue, polyester/cotton		-	-	<b>3</b>
Vests		<b>2</b>		-
Pants			<b>6</b>	
Socks, short, grey			<b>6</b>	
Tie, Elstree School*			1	
<b>Footwear</b>				
Plain black shoes; lace up or velcro			1	
Wellington boots			1	
Trainers, coloured, for outdoor play			1	
Trainers, white for Cricket				1
Football boots with safety studs		1		-
<b>SPORTS KIT (see labelling guide over)</b>				
Swimming trunks, navy*			1	
<b>GAMES KIT: House Colour String Bag</b>			1	
Tracksuit top, navy*			1	
Tracksuit bottoms, navy*			1	
Games shorts, navy*			1	
Towel	L		1	
Games socks, navy, long*			<b>3</b>	
Rugby/Football shirt, pink/navy reversible*			1	
Navy base layer with Logo*			1	
Navy blue Player Layer Shorts			1	
<b>SPORTS HALL KIT: PE Bag, large navy*</b>			1	
PE shorts, white*			<b>2</b>	
PE/Tennis: shirt, white, Elstree Crest*			1	
White socks		1		<b>2</b>
Gym shoes, non marking soles			1	

SUMMER		-	-	1
Cricket jersey, Elstree colours*		-	-	1
Cricket shirt with Elstree crest, cream, 3/4 length sleeves*		-	-	<b>2</b>
Cricket trousers (not required in Year 3)*		-	-	1
Elstree Cricket cap, navy (summer term and start of autumn term)*		1	-	1
Cricket box and Pants (not available from shop)		-	-	1
Athletics t-shirt, house colour		-	-	1
<b>MISCELLANEOUS</b>				
Navy Elstree Kit Bag for matches* (supplied prior to start with name tape already sewn on and charged to pupil account)			1	
Water bottle*			1	
Pencil case with equipment			1	
Elstree Rucksack*			1	
Name Tapes / Large Sports Name Tapes (Initial supply provided prior to start and charged to pupil account; additional to be ordered via Matron)*			Quantity: 144/10/10	
Sun Block (Start of Autumn term and Summer Term)		1	-	1
<b>OPTIONAL ITEMS</b>				
Navy blue gloves			1	-
Navy blue Elstree hat*			1	-
Navy/pink Elstree scarf*			1	-
Cricket boots		-	-	1
Navy blue cricket hat*				1
White Player Layer base layer (for cricket)				1
Elstree Satchel for Years 7 & 8*			1	
<b>FLEXI BOARDERS MUST BRING:</b>				
Duvet covers (Large name tape to be sewn inside at popper/button end)			<b>2</b>	
Poly-cotton pillowcase			<b>2</b>	

### Reminders:

- Day Boys should return to school in normal uniform on the first day of term. You will not need to wear your blazer and tie.
- Games kit (String Bag in House colour) should be taken home each Saturday and a full set of clean games clothes sent in every Monday.
- **Blazers and ties should be worn when going on trips or to away matches.** Matron will **NOT** be able to lend out these items of clothing.
- Further notes overleaf.