



Elstree School

## Boarders' Uniform List

### Uniform Notes

1. On **all** occasions of leave, Boarders must depart from and return to Elstree wearing their blazers and ties.
2. All items must be named and numbered: clothing must have nametapes sewn in and all footwear must be labelled using appropriate shoe labels. (Iron-on plastic tapes are not to be used as they do not withstand laundering).
3. All name tapes, including the large sports tapes, **MUST** be ordered via the School Matrons.
4. All items marked with 'L' must have separate secure hanging loops sewn in.
5. Items marked \* **MUST** be obtained from the School Uniform Shop.
6. Outdoor sports kit is kept in the string bag, whilst the white shorts, shirts and socks are kept in the navy PE bag.
7. Abdominal Protector Pants and Box are required for the Summer Term. These are available from Serious Cricket, Thatcham or any good sports outfitters.

### First Night of Term

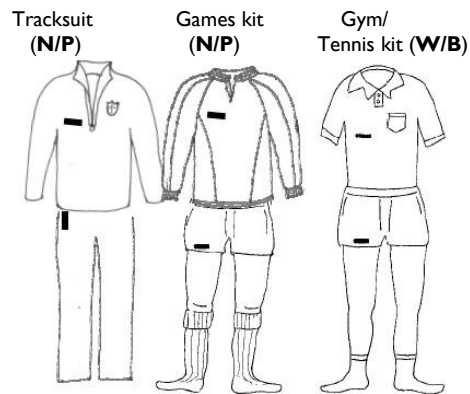
Please pack the following in the overnight bag: pyjamas, dressing gown, slippers, towel, washing kit, 1 duvet cover and 1 pillow case. Duvet and pillow should be packed at the top of the trunk or in a separate bag.

### Name Tapes

Woven name tapes will be supplied via Matron. Regular, daily uniform items should be named in the collar or waist band or vertically at the top for socks.

Large Navy/Pink **(N/P)** and White/Blue **(W/B)** Name tapes for Sports Kit and Reversible Fleece should be positioned as detailed here - along with strongly sewn on loops where necessary. (marked 'L' on the list).

All other items must be clearly labelled with a name and number to minimize 'borrowing' and loss of kit during the term.



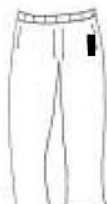
Reversible Waterproof/  
Fleece **(N/P)** nametape on Fleece side



Cricket Jumper  
**(W/B)**



Cricket Shirt  
**(W/B)**



Cricket  
Trousers **(W/B)**

Boy's Name: .....

Peg Number: .....

- House:
- North (blue)
  - East (green)
  - South (red)
  - West (yellow)

The items marked with a \* in this Clothes List **MUST** be obtained from the Elstree School Uniform Shop.

**The Elstree School Uniform Shop** is run by Mrs Sarah Jones and is located in Home Farm Old Dairy. The Shop is open twice a week on Monday and Friday from 8.00am - 10.00am during term-times, at various times before the start of each term, and by appointment during term-time and throughout the school holidays.

Contact details: Email [uniformshop@elstreeschool.org.uk](mailto:uniformshop@elstreeschool.org.uk) to make an appointment or to ask any questions.

It is also possible to place uniform orders by post or email using the Clothes Order Form and Price List which are available from the Uniform Shop with a cheque payable to 'Direct Clothing Company'. When payment has been received and the shop is next open, orders are then left for collection in the Front Hall can be given to the Matrons in the case of full time boarders. Items for overseas boys can be added to the end of term bill.

Every boy should arrive at the start of each term fully equipped with all clothes clean, mended and well-marked with name and peg number. Details of which clothes require hanging loops and where to label sports clothes are on this clothes list. Only those clothes listed should be sent to School. Non-standard items will not be accepted. When necessary, the matrons will sew on name tapes for 50p per item of clothing.

School Uniform and Kit List for Boarders				
MAIN UNIFORM	Loop	Autumn Term	Lent Term	Summer Term
Barathea blazer, navy, with Elstree buttons*	L	1		
Reversible fleece jacket, Elstree crest, navy*	L	1		
Long trousers, medium grey, machine washable	L	3 pairs		
Pullover, navy, long sleeves, crew neck	L	2		
Pullover, navy, sleeveless	L	2		
Long sleeved shirts, pale blue, polyester/cotton	L	4		
Short sleeved shirts, pale blue, polyester/cotton	L	-	-	4
Vests		2		-
Pants		6		
Socks, short, grey		6		
Tie, Elstree School*		1		
FOOTWEAR				
Plain black shoes; lace up or velcro		1		
Wellington boots		1		
Trainers, coloured, for outdoor play		1		
Trainer, White for cricket				1
Football boots with safety studs		1		-
Gym shoes, non marking soles (to live in kit bag)		1		
UPSTAIRS				
Suitcase plus one key (keep spare at home!)		1		
Pyjamas		2		
Dressing gown		1		
Bedroom slippers (standard size for fire safety reasons)		1 pair		
Towels, large (Bath) size, loop in middle of long side	L	3		
Wash bag containing: toothbrush, shower gel, shampoo etc		1 each		
Nail scissors or clippers		1		
Hairbrush, comb and nit comb, one in drawstring bag		2 each		
Small waterproof wash bag for changing room		1		
Duvet: washable, single size		1		
Pillow: washable		1		
Duvet cover: single size (Large name tape to be sewn inside at popper/button end)		2		
Rug / blanket (for bed)		1		
Poly cotton pillowcases		2		

**Items marked:** \* **MUST** be obtained from the School Uniform Shop  
**L MUST** have a secure hanging loop sewn-in

SPORTS KIT (see labelling guide over)	Autumn Term	Lent Term	Summer Term
Swimming trunks, navy*		1	
<b>GAMES KIT: House Colour String Bag*</b>		1	
Tracksuit top, navy*		1	
Tracksuit bottoms, navy*		1	
Games socks, red, long*		3	
Games shorts, navy*		2	
Rugby/Football shirt, red/navy reversible*	L	2	
Blue base layer with Logo*		2	
Towel	L	1	
<b>SPORTS HALL KIT : PE Bag, large navy*</b>		1	
PE shorts, white*		2	
PE/Tennis shirt, white, Elstree Crest		2	
White socks, short		2	4
<b>Summer</b>			
Cricket jersey, Elstree colours*	-	-	1
Cricket shirt, cream, 3/4 length sleeves*	-	-	2
Cricket trousers (not required in Year 3)*	-	-	1
Cricket cap (summer term and start of autumn term)*	1	-	1
Cricket box and pants (not available from shop)	-	-	1
Athletics t-shirt, house colour	-	-	2

#### HOME CLOTHES

Smart trousers		1 pair		
Collared shirt		1		
Jeans or casual trousers		1 pair		
Sweatshirt, jumper or similar		1		
T-shirt or long sleeved top		1		
Casual shorts		-	-	1

#### MISCELLANEOUS

Elstree rucksack *		1		
Elstree Kit Bag* (supplied prior to start with name tape already sewn on and charged to pupil account)		1		
Water bottle*		1		
Pencil case with equipment, Writing case with stationery and stamps		1		
Name Tapes / Large Sports Name Tapes (Initial supply provided prior to start and charged to pupil account; additional to be ordered via Matron)*		<b>Quantity: 144/10/10</b>		
Sun Block (Start of Autumn term and Summer Term)		1	-	1

#### OPTIONAL ITEMS

Navy blue gloves, Elstree hat* and Navy/pink Elstree scarf*		1		-
Cricket boots		-	-	1
Elstree Satchel for Years 7 & 8*		1		
Boys' PlayerLayer Shorts Navy Blue		1		

Further details overleaf